

REPORT 24.034(1) Grant Applications Devenish Bradshaw Charitable Trust

Author: Trudi Deane, Parish Clerk

Date: 15<sup>th</sup> March 2024

#### 1. REPORT SUMMARY

A report to councillors regarding a grant application from Devenish Bradshaw Charitable Trust DBCT.

#### 2. BACKGROUND

DBCT is based in Laverstock and work to conserve the water meadows and chalk stream habitats.

#### 3. SUMMARY

The Clerk has received an application for £1000.00 for funding towards and inclusive access project at the water meadows. The application form is attached Annex One.

#### 4. RECOMMENDATION

That the council consider the application for £1000 from DBCT under the powers granted by Section 137 of the Local Government Act 1972

# REPORT 24.034(1) Grant Applications Devenish Bradshaw Charitable Trust

Author: Trudi Deane, Parish Clerk

Date: 15<sup>th</sup> March 2024

## Annex One

1 Name of Organisation and date (the name of your club, charity etc. plus date of application)

Devenish Bradshaw Charitable Trust (Registered Charity)

2 Amount of Grant aid being requested (how much money are you asking for?)

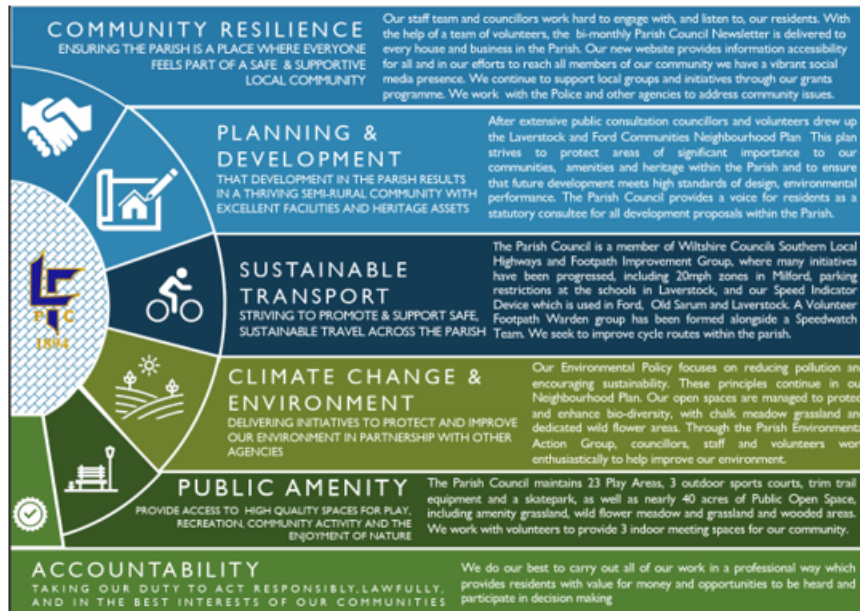
**£1000.00**

3 Tell us about the project or activity you are applying for financial support for (this space is for a summary, you can also include further detail and supporting documents with this application).

### **Laverstock Water-meadows inclusive access project**

The project involves installing 3 new pedestrian wooden field gates with easy access latches and self closing kits and a new large mobility kissing gate on Laverstock water-meadows and upgrading an existing pedestrian field gate by fitting it with an easy access latch. We will also be relocating existing metal field gates so that cattle, sheep can be moved between the fields without having to walk along permissive paths. When livestock are in the fields they will be closed for access but the rest of the year they will be open for public access. For Barn field paddock and Bankside Meadow this will mean that access will be for the majority of the year. Barn field has a dog agility area installed in it and we are planning to also plant traditional orchard trees and wild harvest trees. Bankside Meadow has a new nature trail being installed in it. Bridge field will commonly be grazed by cattle or sheep for three to four months a year but be open to public access the rest of the year. One of the wooden field gates will be installed in Bridge Field, by River Bourne Community Farm cafe. One wooden field gate will be installed in Bankside Meadow to provide an attractive entrance to the nature trail. One field gate will be installed in Barn field so people can access this dry field and orchard easily. The uprated field gate is situated at the opposite site of Barn Field from the new field gate. The large mobility kissing gate will replace a wooden kissing gate unsuitable for access by wheelchair and mobility vehicle users or pushchairs. This is our most heavily used entrance adjacent to Community Farm café.

4 Please explain how your project or activity supports the Laverstock and Ford Parish Council's Parish Plan (available to view at [www.laverstockford-pc.gov.uk](http://www.laverstockford-pc.gov.uk))



Community Resilience – The project is designed to encourage inclusive exploration and discovery by all the community. The field gates we are installing with easy access latches will enable people to enjoy two flood plain meadows and a dry grassland and traditional orchard area. These feature a dog agility area on dry grassland and a nature trail with natural play features in one of the flood plain meadows.

Planning and Development – all of our land is protected from future built development having been purchased for the community. Previous attempts to drain and smother the floodplain meadows for housing are a salutary reminder of the need for sustainable planning and development which we will sensitively interpret.

Climate Change and Environment – Our floodplain meadows provide a vital service buffering Laverstock residents and residents in neighbouring parishes from increasingly extreme flood events. The project includes interpretation of the vital role our meadows

## REPORT 24.034(1) Grant Applications Devenish Bradshaw Charitable Trust

Author: Trudi Deane, Parish Clerk

Date: 15<sup>th</sup> March 2024

play with respect to both the climate change emergency and the biodiversity crisis. The project ensures enhance opportunities for people to enjoy the meadows through peaceful recreation activities.

Public Amenity. – The project enhances access to our 60 plus acres of floodplain meadows and associated habitats.

Accountability – We provide full and comprehensive annual accounts and financial reports viewable on the Charity Commission web-site. The project is in line with our management plan for our land which is reviewed annually by our Board of 8 Trustees who all live locally and are committed to fulfilling the charitable objectives of Devenish Brashaw Charitable Trust. We also consult widely with local specialists and visitors to the water-meadows and carrying out robust annual ecological surveys of the wildlife of the water-meadows.

5 Please tell us how your project or activity meets the criteria set out in the Laverstock and Ford Parish Council's grant

- The extent to which the project will provide a measurable improvement to the community and achieve the aims of the Parish Council Grant Scheme.

The project has a design life of 10 to 15 years and will bring measurable improvement to c5000 community members per annum

- No grants will be awarded for commercial ventures or private gain.

We are a registered charitable body and as such do not have any commercial ventures or private gain

- Grants will not be awarded for political or religious campaigns or activities.

We are apolitical and do not promote religious campaigns or activities.

- Grants will not normally be made retrospectively.

The grant will fund a new project. No materials have been purchased prior to this application.

- Financial assistance will not be awarded to individuals (section 137 of the Local Government Act 1972).

We are a charitable organisation, no individuals will profit from this project.

REPORT 24.034(1) Grant Applications Devenish Bradshaw Charitable Trust

Author: Trudi Deane, Parish Clerk

Date: 15<sup>th</sup> March 2024

- How effectively the grant will be used e.g. has the best deal been sought for the purchase of the equipment.

We have researched materials extensively to find the best prices and value for money options.

- The anticipated costs and outcomes of the project are appropriate, realistic and an effective use of Parish Council financial resources.

We have designed the project so that anticipated costs are kept to minimum. Existing field gates and wooden kissing gate will be re-sited to new locations to ensure best value for money is achieved from the whole project.

- Full disclosure of all other grants applied for with respect to the project proposal.

We have provided full disclosure for the other revenue we are utilizing in the project.

- Evidence that the funds could not be raised from another more appropriate source for the project (including the applicants own reserves).

The charity has no reserves currently and has looked at other options for funding.

- The grant contribution will be considered in the context of related facilities provided by the applicant, other organisations and the parish council (see figure 1)

- All applicant organisations that request a grant of £1,000 or above must disclose their financial reserves in their application.

We have disclosed that we have no financial reserves available to fund this project.

6 Approximately how many people who will benefit from your project or activity are residents of Laverstock and Ford Parish?

Estimate 4,000.00 , Total footfall in last two years 20,000 per annum

7 What will be the TOTAL cost of your project/activity (not just the money you are applying for in this application but the overall cost of the project)

1457.40 including VAT

8 Have you applied for grant/s for this project or activity from any other source? (Please give details and tell us the dates of when these monies will be awarded)

Enquired of Community Landfill Tax grant scheme but long waiting list.

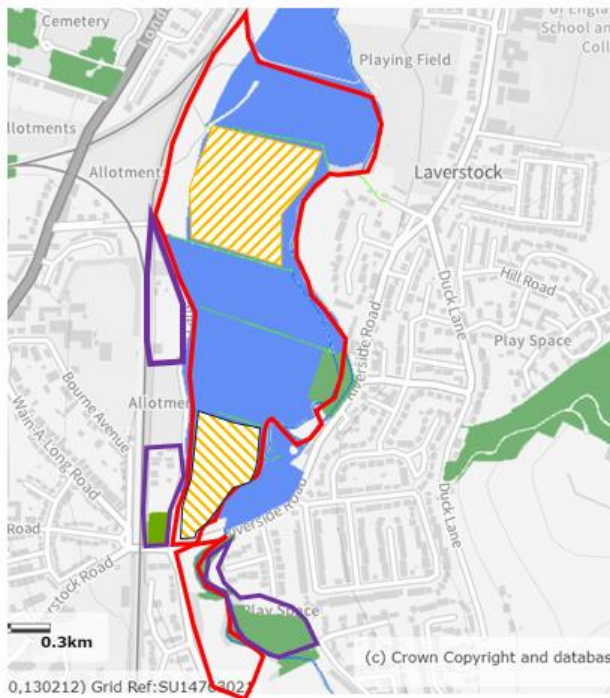
9 If the TOTAL cost of your project/activity is more than the grant being applied for how will you fund the remaining costs?

From unrestricted Farming Single Payment Scheme revenue

Costings

661.20 inc VAT x 1 large mobility kissing gate  
131.10 inc VAT x 3 393.30 Wooden field gates  
95.90 x 3 = 287.70 self closing rising hinge gate system  
87.60 x 4 Trombone easy one way latch 350.40  
4.50 x 6 27 Chestnut hanging posts and slam post  
Total Including VAT £1457.40

Currently we have no Financial Reserves



**Figure 2**

DBCT land, PC land,  
DBCT fields enhanced  
by the project

**Key**

DBCT land boundary



PC land boundary



DBCT fields enhanced  
by this Project

